

**Manchester City Council
Report for Information**

Report to: Health Scrutiny Committee – 3 September 2015

Subject: Health and Wellbeing update – Part 2

Report of: Head of Corporate Services – North, Central and South
Manchester Clinical Commissioning Groups

Summary

This report provides Members of the Committee with an overview of developments in the local NHS.

Recommendations

The Health Scrutiny Committee is asked to note the contents of this report.

Wards Affected: All

Contact Officers:

Name: Nick Gomm
Position: Head of Corporate Services
Telephone: 0161 765 4201
E-mail: n.gomm@nhs.net

Background documents (available for public inspection):

The following documents disclose important facts on which the report is based and have been relied upon in preparing the report. Copies of the background documents are available up to 4 years after the date of the meeting. If you would like a copy please contact one of the contact officers above.

None

1. Introduction

1.1 This is a health update paper produced by North, Central and South Manchester Clinical Commissioning Groups (CCGs) for the Health and Wellbeing Overview and Scrutiny Committee. It provides a brief summary of issues or news items that may be of interest to the Committee.

1.2 If Committee members of the Committee have any specific questions about the contents of this paper, please email them to n.gomm@nhs.net.

2. Cancer update

2.1 Background/Introduction

Craig Harris, Director of the Citywide Commissioning & Quality Team was asked to provide an overview of cancer services in Manchester to the Health Overview and Scrutiny Committee in February 2015. Other participants included:

- Manchester Macmillan Cancer Improvement Partnership
- Macmillan Cancer Care
- Cancer Research UK
- Manchester Cancer Provider Board
- Specialist Commissioning

Following discussion with committee members there were several areas identified that would benefit from further research and information. An update of progress addressing these actions is given below.

2.2 Cost of cancer care

Below is an extract from Manchester's Joint Strategic Needs Assessment on Cancer (August 2013):

Cancer treatment and ongoing support are significant costs to the local health and care economy. Programme budgeting data (released December 2012, shows the following:

- £292,000 was spent on cancer prevention and health promotion
- £4,105,000 was spent on primary care prescribing for cancer
- £10,184,000 was spent on elective and in-patient day case care
- £5,028,000 was spent on non-elective in-patient care
- £18,611,000 was spent on "other" secondary
- £4,249,000 on community care
- £872,000 on care provided in other settings
- £4,667,000 (of NHS money) on non-health / social care

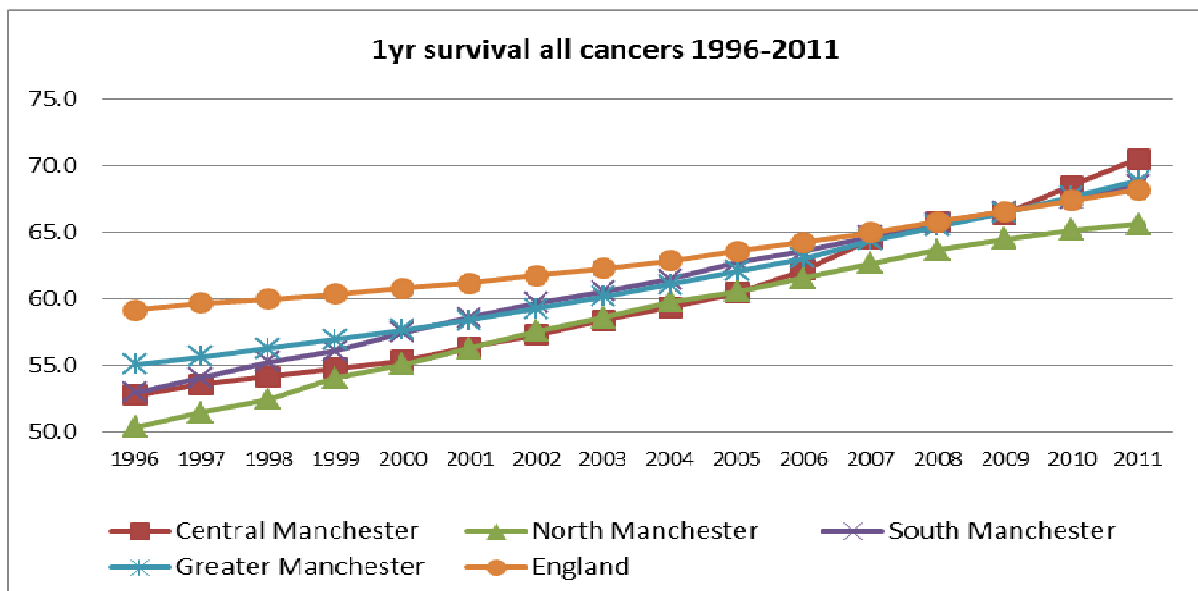
TOTAL EXPENDITURE = £49,875,000

The three Manchester CCGs have commissioned a 'Deep Dive Review' of Cancer Services across Manchester. This should identify queries around costs and spend for our services, and provide comparisons with similar CCGs. The information packs

are expected in September 2015 with a workshop to discuss findings, identify priorities and develop recommendations. The Executive Member for Health and Social Care and the Chair of the Health Scrutiny Committee have been invited to the sessions.

2.3 Cancer survival

1yr survival for all cancers combined, by year of diagnosis, adults (15-99), by CCGs, 1996-2011																
CCG	1996	1997	1998	1999	2000	2001	2002	2003	2004	2005	2006	2007	2008	2009	2010	2011
Central Manchester	52.8	53.6	54.2	54.8	55.4	56.4	57.3	58.4	59.4	60.5	62.2	64.5	65.8	66.4	68.5	70.5
North Manchester	50.4	51.5	52.5	54.1	55.1	56.3	57.6	58.6	59.8	60.6	61.6	62.7	63.7	64.5	65.2	65.6
South Manchester	53.0	54.1	55.3	56.1	57.5	58.6	59.7	60.6	61.5	62.8	63.6	64.7	65.7	66.6	67.5	68.6
Greater Manchester	55.1	55.7	56.3	57.0	57.7	58.4	59.3	60.2	61.1	62.1	63.1	64.4	65.5	66.5	67.7	68.9
England	59.2	59.7	60.0	60.4	60.8	61.2	61.8	62.3	62.9	63.6	64.3	65.0	65.8	66.6	67.4	68.2



The above figures show the improvements in cancer survival in Manchester over the last 15 years. Central Manchester and South Manchester 1 year survival figures are now just above the Greater Manchester and national average. North Manchester has shown a significant improvement in survival but remains just below the Greater Manchester and national average.

2.4 Screening

Uptake of national cancer screening programmes in Manchester:

Manchester breast screening programme Q1 2014-15 = 61.6% (national minimum standard = 70%)

Bowel screening Q1 2014-15: (national minimum standard = 52%)

CMCCG = 38.5%

NMCCG = 45.1%

SMCCG = 42.9%

Cervical screening uptake Q4 2013-14: (national minimum standard = 80%)

CMCCG = 69.5%

NMCCG = 72.1%

SMCCG = 73.3%

2.5 Manchester CCGs' Locally Commissioned Service

Currently 90% of practices across Manchester are signed up to the Locally Commissioned Service, designed to promote support and management of patients in primary care.

Four facilitators are in post to support practice with self assessment against the LCS standards and to develop action plans to address gaps. Non-Clinical Cancer Champions have been identified and are participating in education & training package to support their development and address the needs of patients.

Objectives from the LCS have been included into new primary care standards for the Manchester CCGs.

2.6 Public Health activity

Manchester City Council Public Health Team was actively involved in a 3 year community cancer awareness project ("Let's be clear, Get it checked!"), in collaboration with Macmillan, Christie Hospital and Greater Manchester & Cheshire Cancer Network. The University of Manchester was tasked with evaluating the project, with the final evaluation report expected September 2015.

MCC has supported the Manchester based Macmillan "Move More Project" by devising and writing the project and implementation plan, identified partnership networks to support the commissioning of relevant and appropriate service providers, and are responsible for chairing the strategic steering group and offering a support and leadership role for the project working group.

MCC supports campaigns to increase awareness and uptake of the national bowel screening programme. This includes linking with Cancer Research UK to deliver an advertising campaign to raise awareness of bowel screening (benefits / eligibility) in Manchester (August 2015 – March 2016)

The Manchester Public Health Team also contribute to cancer work in a number of other ways:

- Key member of the Manchester Macmillan Cancer Improvement Partnership Programme
- Public Health chairs the Manchester Cancer Information and Support Service
- Member of Christie Survivorship Steering Group, contributing to the development of the Recovery Package
- Living Well and Beyond Cancer Support Group
- Supported the development of the Macmillan Volunteer Hub

In October the Director of Public Health will provide the Committee with a detailed overview of how the redesign of a wide range of public health and wellbeing services will contribute to cancer prevention in the City.

3. National Transplant Week - 7 Days to Say I Do

3.1 NHS Blood and Transplant are leading the National Transplant Week campaign - 7 Days to Say I Do, taking place 7-13 September 2015. The campaign will focus on encouraging individuals to discuss their decision about organ donation with those closest to them.